

This is marketing communication

Portfolio Managers

BMC Global Small Cap Select is managed by Henrik Milton and Johan Agneman. Henrik brings over 25 years of equity management experience, having managed two funds that was rated five-star by Morningstar and held a portfolio management positions at SEB. Johan has a broad experience from various finance and business roles within global industrial companies where he has primarily been responsible for M&A and strategy.

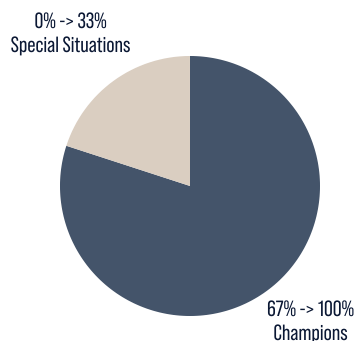


Henrik Milton



Johan Agneman

Investment Objective



BMC Global Small Cap Select is an actively managed global small-cap fund focused on quality, entrepreneurship, and long-term high returns. The fund's primary objective is to deliver an average annual return of 15-20% over a full economic cycle, in a balanced, sustainable, and risk-adjusted manner. The fund invests in 30-50 carefully selected small-cap companies worldwide – businesses with strong ownership, solid profitability, clear growth potential, and reasonable valuations based on BMC's internal fundamental analysis. The portfolio management is entirely index-independent, providing the freedom to select the most attractive opportunities globally. The portfolio consists primarily of "Champions" – market-leading companies with strong financials and a high ability to grow future earnings – complemented by "Special Situations", where a clear value-driving catalyst may unlock additional return potential. The fund is classified as Article 8 under SFDR and invests in companies with a sustainable and investable ESG profile.

Fund Facts

Inception Date	2022-03-28
Structure	UCITS
Base Currency	SEK
Dealing	Daily
Benchmark	MSCI AC WORLD SM CAP NR
SFDR	Article 8
Risk	4 of 7
Management Fee	1.40%
Performance Fee	Yes ¹⁾
Fund Size	SEK 1 406m
Distributing	No
No of holdings	40
Settlement	T+2
ISIN (R EUR)	LU239559854

¹⁾ For further information, please see the Key Investor Information Document.

Top 5 Contributors

Covenant Logistics	0.80%
Koninklijke Bam Groep	0.74%
First Advantage Corp	0.71%
Climb Global Solutions	0.70%
TD Synnex Corp	0.59%

Top 5 Detractors

Palomar Holdings Inc	-0.39%
Limbach Holdings Inc	-0.36%
Kandenko CO LTD	-0.16%
Griffon Corp	-0.14%
Nyab AB	-0.09%

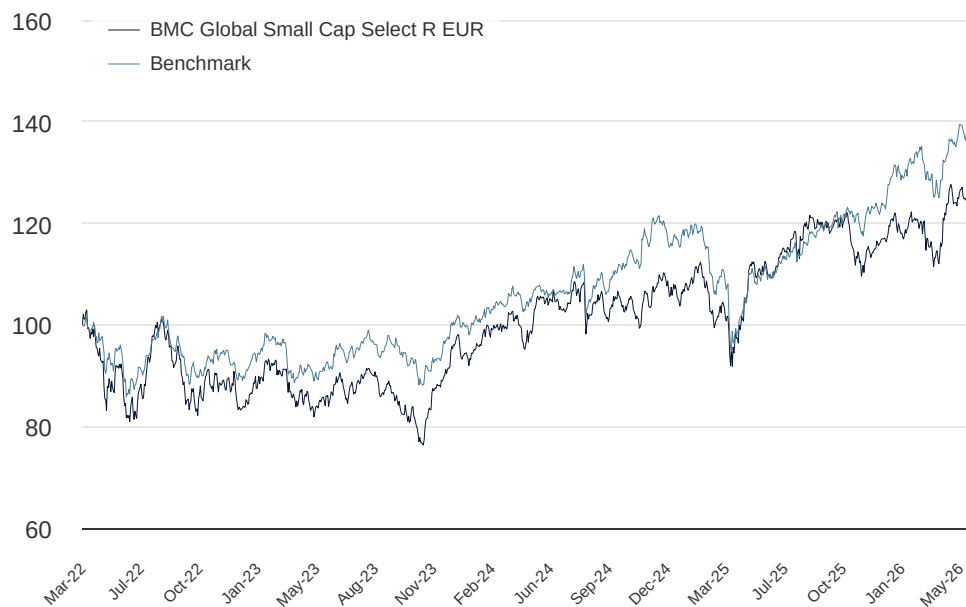
Performance %

	YTD	1 Month	1 Year	5 Years	10 Years	Since Inception
R EUR	13.07	6.86	18.80	-	-	31.84
Benchmark	15.83	4.37	29.83	48.93	158.55	42.23

Yearly Performance %

	2023	2024	2025	2026
R EUR	17.02	8.97	9.11	13.07
Benchmark	13.30	14.78	5.54	15.83

Fund growth for BMC Global Small Cap Select R EUR



Past performance is not a guarantee of future results. The value of your investment may increase or decrease and it is not certain that you will get back the full amount invested.

This is marketing communication

Sector Allocation

Industrials	35.35%
Financials	12.40%
Technology	11.88%
Consumer Discretionary	10.17%
Real Estate	6.14%
Consumer Staples	4.85%
Materials	4.78%
Communications	4.26%
Other	10.17%

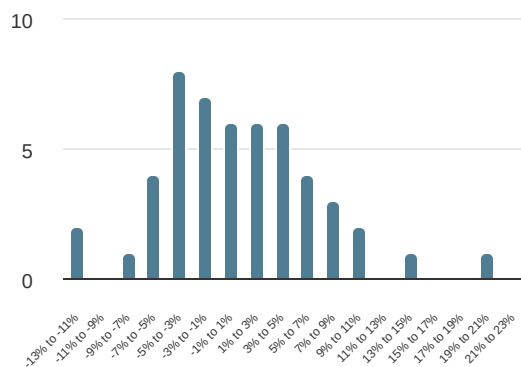
Top 10 Holdings

United Natural Foods Inc	4.61%
flatexDEGIRO SE	4.55%
Covenan Log Grp --- SHS -A-	4.47%
Til Synnex Corp	4.36%
Idt Corp	4.25%
NCR Atleos Corp	4.23%
Wesco International Inc	4.20%
Griffon Corp	4.00%
Sdptech Rg-B	3.89%
Koninklijke Bam Groep NV	3.82%

Country Allocation

United States of America	59.15%
Sweden	12.25%
Japan	7.68%
Germany	4.95%
Netherlands	3.83%
Poland	2.90%
France	2.39%
Great Britain	2.06%
Austria	1.89%
Other	2.91%

Distribution Performance Per Month %



Risk Metrics (36 Months)

Annualized Performance Since Inception	6.85%
Tracking Error	9.58%
Information Ratio	-0.02
Sharpe Ratio	0.76
Standard Deviation For Fund	18.04%

Highest And Lowest Historical Performance

	BMC Global Small Cap Select R EUR		Benchmark	
Highest Daily Gain	5.75%	2022-05-13	8.25%	2020-03-24
Largest Daily Loss	-5.29%	2024-08-02	-10.32%	2020-03-12
Highest Monthly Gain	20.05%	Jul-22	15.24%	Nov-20
Largest Monthly Loss	-11.82%	Sep-22	-21.02%	Mar-20

Monthly Performance %

Year	Jan	Feb	Mar	Apr	May	Jun	Jul	Aug	Sep	Oct	Nov	Dec	Total
2026	0.24	3.00	-5.57	8.52	6.86	-	-	-	-	-	-	-	13.07
2025	2.28	-2.69	-5.28	-0.04	10.21	0.56	5.49	2.76	-1.58	-2.43	-0.66	1.03	9.11
2024	-2.18	3.69	3.24	-3.76	6.29	-1.76	4.67	-1.30	-0.99	-5.89	8.09	-0.47	8.97
2023	6.09	1.96	-3.91	-3.85	3.37	1.63	3.85	-3.24	-4.76	-8.15	14.96	10.29	17.02

Important Information

This is a marketing communication. Before making any final investment decisions, please refer to the prospectus of Brock Milton Capital UCITS SICAV, its Annual Report, and the KIID of the relevant Sub-Fund. Relevant information documents are available in English at <https://www.bmcapital.se/en/>. A summary of investor rights will be available at <https://www.bmcapital.se/en/legal-information>. Past performance is not a guarantee of future returns. The price of the investment may go up or down and an investor may not get back the amount originally invested. The management company has the right to terminate the arrangements it has made for marketing the fund, in accordance with Article 93a of Directive 2009/65/EC and Article 32a of Directive 2011/61/EU. The state of the origin of the fund is Luxembourg. In Switzerland, the representative is Acolin Fund Services AG, Thurgauerstrasse 36/38, CH-8050 Zurich, whilst the paying agent is Banque Cantonale Vaudoise, Place St-François 14, CH-1003 Lausanne. The prospectus, the key information documents, the articles of association as well as the annual and semi-annual reports may be obtained free of charge from the representative. Past performance is not a guarantee of future returns. The price of the investment may go up or down and an investor may not get back the amount originally invested. This presentation is not intended to be distributed in the USA or other countries where the content or the distribution may be prohibited. The fund described herein may not be offered or sold to US citizens or residents of the USA or to a corporate, partnership or other entity created or organized in or under the law of the USA. Although the information has been based on sources deemed to be reliable (Caceis Bank), Brock Milton Capital cannot guarantee its accuracy and assumes no liability whatsoever for incorrect or missing information nor for any loss, damage or claim arising from the use of the information in this presentation.

Contact Information

Brock Milton Capital AB
Nybrogatan 34
114 39 Stockholm

Anna Lindhs plats 4
211 19 Malmö

Email: info@bmcapital.se
www.bmcapital.se