

This is marketing communication

Portfolio Managers

BMC Global Select is managed by Andreas Brock and Henrik Milton, who together bring over 40 years' investment experience. Andreas has worked as an analyst and portfolio manager at Capital Group, among other roles. Henrik has managed two funds that were awarded five stars by Morningstar, and also as a portfolio manager at SEB.

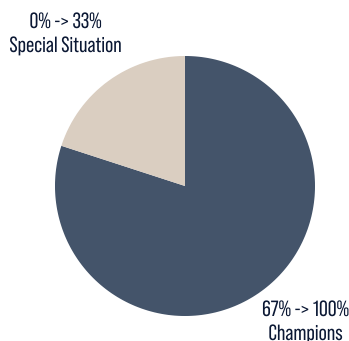


Andreas Brock



Henrik Milton

Investment Objective



BMC Global Select follows a concentrated and benchmark agnostic investment approach. With an emphasis on developed markets, the Fund invests globally in the two categories of Champions and Special Situations:

- Champions are defined as market leaders with strong balance sheets in leading and growing sectors. They benefit from strategic advantages, a reasonable valuation, and pricing power. Champions will make up no less than 2/3 of the investment portfolio.
- Special Situations are companies presenting attractive entry points, being doubted by the broader market, but where positive change is expected. Such have reasonable indebtedness and are often cheap with a strong upside price potential, however in sectors which are deemed uninteresting for long-term ownership. As a group, they will at most make up 1/3 of the investment portfolio.

The portfolio typically consists of 25-35 holdings and aims to be fully invested in all market environments.

Fund Facts

Inception Date	2014-11-28
Structure	UCITS
Base Currency	SEK
Dealing	Daily
Benchmark	MSCI AC World Daily TR N
SFDR	Article 8
Risk	4 of 7
Managemt Fee	1.40%
Performance Fee	Yes ¹⁾
Fund Size	SEK 18 401m
Distributing	No
No of holdings	36
Settlement	T+2
ISIN	LU1133292976

¹⁾ For further information, please see the Key Investor Information Document.

Top 5 Contributors

Alphabet INC -A-	1.28%
Amazon Com INC	1.22%
Prismian SPA	0.90%
Advanced Micro Devices	0.87%
Broadcom INC	0.77%

Bottom 5 Contributors

HCA Healthcare	-0.26%
Wheaton Precious Metals Corp	-0.21%
Coca-Cola Bottlers Jap	-0.08%
Lennox International Inc	0.04%
Mastercard Inc	0.04%

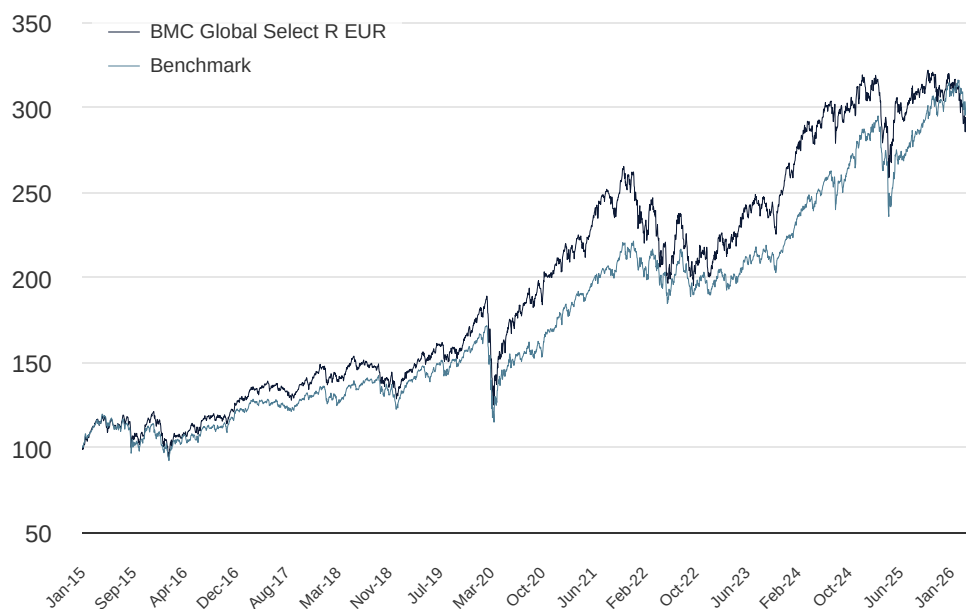
Performance %

	YTD	1 Month	1 Year	5 Years	10 Years	Since Inception
R EUR	3.43	11.75	14.71	45.53	200.69	220.99
Benchmark	6.77	8.49	27.51	70.10	210.10	222.60

Yearly Performance %

	2015	2016	2017	2018	2019	2020	2021	2022	2023	2024	2025	2026
R EUR	15.67	9.16	13.50	-8.40	32.12	19.44	25.56	-22.86	33.15	14.53	1.44	3.43
Benchmark	8.75	11.40	8.61	-5.16	29.47	6.71	27.36	-13.29	18.50	25.26	7.85	6.77

Fund growth for BMC Global Select R EUR



Past performance is not a guarantee of future results. The value of your investment may increase or decrease and it is not certain that you will get back the full amount invested.

This is marketing communication

Sector Allocations

Financials	26.06%
Technology	24.26%
Industrials	9.85%
Materials	9.43%
Consumer Discretionary	7.51%
Consumer Staples	5.68%
Communications	4.45%
Health Care	3.26%
Real Estate	2.51%
Other	6.99%

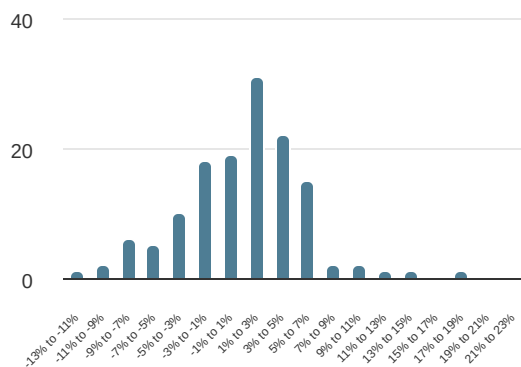
Top 10 Holdings

Amazon Com INC	4.44%
Nvidia Corp.	4.42%
Alphabet INC -A-	4.42%
TSMC	4.27%
Microsoft Corp	4.21%
Mastercard Inc. Shs-A-	4.03%
Prysmian SPA	3.80%
Til Synnex Corp	3.73%
Kandenko Co Ltd	3.59%
Vulcan Materials	3.53%

Country Allocations

United States of America	51.24%
Japan	8.16%
France	6.36%
Poland	5.07%
Italy	4.80%
Hong Kong	4.59%
Taiwan (Province of China)	4.31%
India	3.26%
Canada	2.95%
Other	9.26%

Distribution Performance Per Month %



Risk Metrics (36 Months)

Annualized Performance Since Inception	10.87%
Tracking Error	6.29%
Information Ratio	-0.59
Sharpe Ratio	0.76
Standard Deviation For Fund	14.66%

Highest And Lowest Historical Performance

	BMC Global Select R EUR		Benchmark	
Highest Daily Gain	7.35%	2020-03-24	8.40%	2020-03-24
Lowest Daily Loss	-8.32%	2020-03-23	-9.50%	2020-03-12
Highest Monthly Gain	17.50%	Jul-22	12.33%	Nov-20
Lowest Monthly Loss	-11.64%	Mar-20	-13.50%	Mar-20

Monthly Performance %

Year	Jan	Feb	Mar	Apr	May	Jun	Jul	Aug	Sep	Oct	Nov	Dec	Total
2026	0.03	0.26	-7.72	11.75	-	-	-	-	-	-	-	-	3.43
2025	3.60	-4.43	-5.96	-1.77	6.91	-0.86	5.34	-1.26	1.21	2.33	-2.12	-0.76	1.44
2024	2.01	3.88	2.96	-2.35	1.03	4.66	-0.81	0.69	-0.78	-1.01	5.92	-2.15	14.53
2023	6.61	2.00	2.45	0.24	5.07	2.79	2.05	-0.04	-2.82	-4.90	9.99	6.47	33.15
2022	-7.82	-4.37	6.16	-5.16	-5.41	-8.97	17.50	-5.05	-9.10	4.62	1.03	-5.85	-22.86
2021	-1.89	3.67	3.04	1.60	1.02	5.38	3.68	3.20	-4.31	3.63	1.77	2.60	25.56
2020	1.77	-8.58	-11.64	13.05	5.06	1.54	3.62	6.68	-0.73	-2.67	8.96	3.52	19.44
2019	6.70	3.51	2.70	3.65	-1.94	2.91	2.66	-2.48	0.86	2.53	5.66	1.79	32.12
2018	2.11	-2.37	-2.53	2.49	4.31	-1.46	1.04	0.38	-1.02	-4.88	1.41	-7.59	-8.40
2017	1.18	4.77	0.49	1.40	-1.11	-1.18	-0.26	-1.33	2.53	3.59	0.07	2.80	13.50
2016	-10.03	-0.55	3.41	-0.26	6.74	-3.42	6.15	1.10	-0.80	-0.29	4.47	3.47	9.16
2015	4.64	7.26	2.57	-3.21	3.28	-3.14	3.44	-7.74	-3.32	10.14	6.12	-3.77	15.67

Important Information

This is a marketing communication. Before making any final investment decisions, please refer to the prospectus of Brock Milton Capital UCITS SICAV, its Annual Report, and the KIID of the relevant Sub-Fund. Relevant information documents are available in English at <https://www.bmcapital.se/en/>. A summary of investor rights will be available at <https://www.bmcapital.se/en/legal-information>. Past performance is not a guarantee of future returns. The price of the investment may go up or down and an investor may not get back the amount originally invested. The management company has the right to terminate the arrangements it has made for marketing the fund, in accordance with Article 93a of Directive 2009/65/EC and Article 32a of Directive 2011/61/EU. The state of the origin of the fund is Luxembourg. In Switzerland, the representative is Acolin Fund Services AG, Thurgauerstrasse 36/38, CH-8050 Zurich, whilst the paying agent is Banque Cantonale Vaudoise, Place St-François 14, CH-1003 Lausanne. The prospectus, the key information documents, the articles of association as well as the annual and semi-annual reports may be obtained free of charge from the representative. Past performance is not a guarantee of future returns. The price of the investment may go up or down and an investor may not get back the amount originally invested. This presentation is not intended to be distributed in the USA or other countries where the content or the distribution may be prohibited. The fund described herein may not be offered or sold to US citizens or residents of the USA or to a corporate, partnership or other entity created or organized in or under the law of the USA. Although the information has been based on sources deemed reliable (Caceis Bank), Brock Milton Capital cannot guarantee its accuracy and assumes no liability whatsoever for incorrect or missing information nor for any loss, damage or claim arising from the use of the information in this presentation.

Contact Information

Brock Milton Capital AB
Nybrogatan 34
114 39 Stockholm

Anna Lindhs plats 4
211 19 Malmö

Email: info@bmcapital.se
www.bmcapital.se